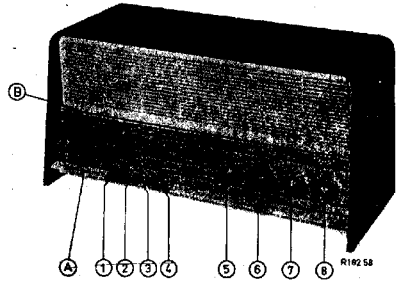


PHILIPS

Service

RADIO

B3X 02 A/00/01



Controls

F.M. switch	1
M.W. switch	2
S.W. switch	3
L.W. switch	4
Tuning	5
Vol. control + mains switch	6
Tone control	7
P.U. switch	8

Bedieningsorganen

F.M.-schakelaar	1
M.G.-schakelaar	2
K.G.-schakelaar	3
L.G.-schakelaar	4
Afstemming	5
Vol.regelaur + netschakelaar	6
Toonregelaar	7
P.U.-schakelaar	8

Bedienungsorgane

U.K.W.Schalter	1
M.W. Schalter	2
K.W. Schalter	3
L.W. Schalter	4
Abstimmung	5
Lautstärkeregl. + Netzschalter	6
Klangregler	7
P.U. Schalter	8

Organes de commande

Comm. de F.M.	1
Comm. de P.O.	2
Comm. de O.C.	3
Comm. de G.C.	4
Syntomisation	5
Contrôle de volume + int. de réseau	6
Contrôle de ton.	7
Comm. de P.U.	8

Organes de mando

Comm. de F.M.	1
Comm. de O.M.	2
Comm. de O.C.	3
Comm. de O.L.	4
Sintonfa	5
Control de vol. + Int. de red	6
Heg. de tono	7
Comm. de F.C.	8

Specification

Loudspeaker	AD 2460 M
I.F. (A.M.)	452 Kc/s
I.F. (F.M.)	10.7 Mc/s
Mains voltages	110-127-145-220 V
Consumption	52 W (220 V)
Dimensions	420x202x195 mm 16 1/2 x 8 x 7 3/4"

Specificatie

Luidspreker	AD 2460 M
M.F. (A.M.)	452 Kc/s
M.F. (F.M.)	10.7 Mc/s
Netspanningen	110-127-145-220 V
Verbruik	52 W (220 V)
Afmetingen	420x202x195 mm 16 1/2 x 8 x 7 3/4"

Spezifikation

Lautsprecher	AD 2460 M
Z.F. (A.M.)	452 Kc/s
Z.F. (U.K.W.)	10.7 Mc/s
Netzspannungen	110-127-145-220 V
Verbrauch	52 W (220 V)
Abmessungen	420x202x195 mm 16 1/2 x 8 x 7 3/4"

Spécification

Haut-parleur	AD 2460 M
M.F. (A.M.)	452 Kc/s
M.F. (F.M.)	10.7 Mc/s
Tensions de réseau	110-127-145-220 V
Consommation	52 W (220 V)
Dimensions	420x202x195 mm 16 1/2 x 8 x 7 3/4"

Especificación

Altavoz	AD 2460 M
F.I. (A.M.)	452 Kc/s
F.I. (F.M.)	10.7 Mc/s
Tensiones de red	110-127-145-220 V
Consumo	52 W (220 V)
Dimensiones	420x202x195 mm 16 1/2 x 8 x 7 3/4"

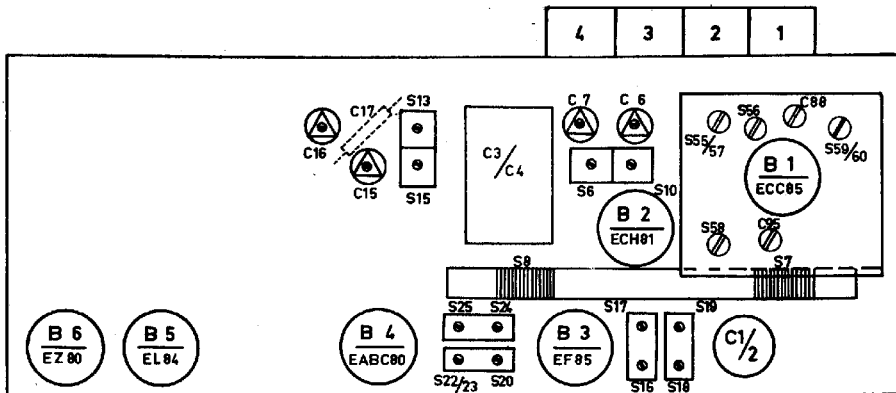
Wave ranges - Golfbereiken - Wellenbereiche - Gammes d'ondes - Margenes de ondas

F.M. - F.M. - U.K.W. - F.M. - F.M.	: 3 - 3,43 m (100,2 - 87,3 Mc/s)
M.W. - M.G. - M.W. - P.O. - O.M.	: 185 - 580 m (1620 - 517 Kc/s)
S.W. - K.G. - K.W. - O.C. - O.C.	: 16,5 - 50,8 m (18,2 - 5,9 Mc/s)
L.W. - L.G. - L.W. - G.O. - O.L.	: 1150 - 2000 m (260 - 150 Kc/s)

Valves - Buizen - Röhren - Tubes - Valvulas

B1 - ECC85	B3 - EF85	B5 - EL84	B7 - EM84
B2 - ECH81	B4 - EAEC80	B6 - EZ80	L1 - 9024N/07

SERVICE INFORMATION										
---------------------	--	--	--	--	--	--	--	--	--	--



R187 57

Serv-O-Mecum	Push button	Trimming point	Signal	Trim	Output
E - a - 1	Touche pousseiro	Point de réglage	Signal	Régler	Tension de sortie
E - a - 2	Druckknopf	Trimmpunkt	Signal	Abgleichen	Output
E - a - 3	Drukknop	Trimpunt	Signaal	Afregelen	Output
	Pulsador	Punto de ajuste	Señal	Ajústese	Tension de salida
I.F.-M.F.-Z.F.-M.F. F.I. (A.M.)	2	1	452 kc/s via 33.000pF g1B2	S25, S24, S18, S19.	
R.F. and oscillator circuits (A.M.)	2	3	550 kc/s	S15, S8	Max.
Circuits H.F. et oscillateurs (A.M.)		2	1500 kc/s	C15, C7	
H.F. and Oscillator Kreise (A.M.)	4	3	157 kc/s	S7	
H.F. en oscillator kringen		2	259.5kc/s	C17	
Circuitos de R.F. y oscilador (A.M.)	3	3	8.5 Mc/s	S13, S6	
		2	17.1 Mc/s	C16, C6.	
(F.M.)				S20	Max. D.V.
I.F.-M.F.-Z.F. M.F.-F.I.	1	100 Mc/s	10,7 Mc/s via 1500pF	g1B3 S22, S23 * g1B2 S16, S17** S10, S59	O.V. D.V. Max. D.V. Max. D.V.
R.F. circuits. Circuits H.F. H.F. Kreise (F.M.) H.F. Kringen. Circuitos de R.F.		87,5Mc/s	87.5Mc/s	S56, C95	
		100 Mc/s	100 Mc/s	C88	Max. D.V.
		94 Mc/s	94 Mc/s	S57, C95	

* Connect two resistors of 0.22MΩ (1%) in series across C38. Connect the diode-voltmeter (D.V.) between the junction of the two resistors and the junction C34, R13.

**Remove the resistors of 0.22 MΩ and connect the diode-voltmeter (D.V.) again across C38 (in series with 0.1 MΩ

* Connecter en parallèle sur C38 deux résistances connectées en série de 0.22MΩ (1%). Connecter le voltmètre à diode (D.V.) entre le noeud de ces résistances et le noeud C34, R13.

**Enlever les résistances de 0.22 MΩ et connecter le voltmètre à diode (D.V.) à nouveau sur C38 (en série avec 0.1 MΩ)

* Parallel an C38 zwei in Serie geschalteten Widerstände von 0.22MΩ (1%) anschliessen. Das Diodevoltmeter zwischen dem Knotenpunkt dieser Widerstände und dem Knotenpunkt C34, R13 anschliessen.

**Die Widerstände von 0.22 MΩ entfernen und das Diodevoltmeter wieder über C38 anschliessen (in Serie mit 0.1 MΩ)

* Sluit parallel aan C38 twee in serie geschakelde weerstanden van 0.22MΩ (1%). Sluit de (D.V.) aan tussen het knooppunt van deze weerstanden en het knooppunt C34, R13.

**De weerstanden van 0.22 MΩ verwijderen en de diodevoltmeter weer aansluiten over C38 (in serie met 0.1 MΩ)

* Conectese dos resistencias conectadas en serie de 0.22MΩ (1%) en paralelo a C38. Conectese el voltmetro a diodo (D.V.) entre el empalme de estas resistencias y el empalme C34, R13.

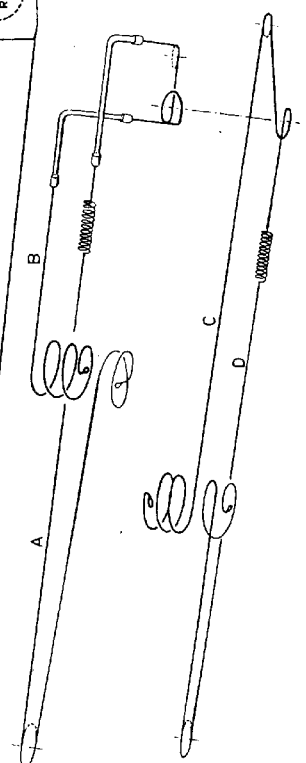
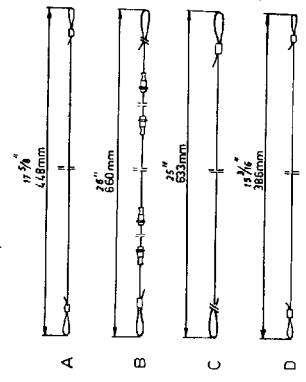
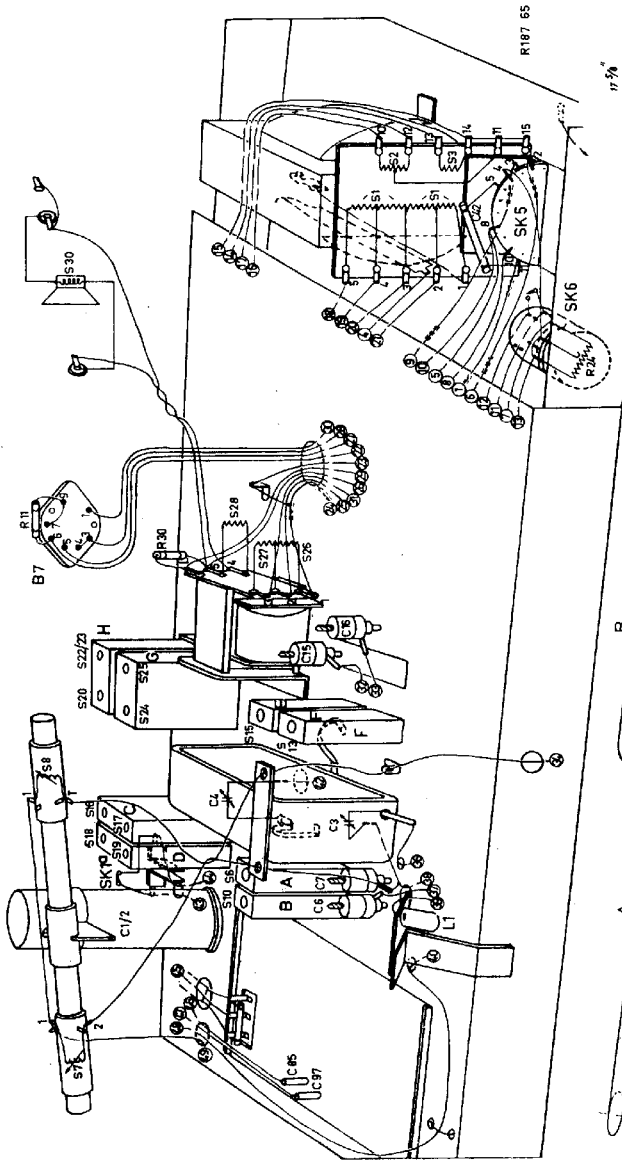
**Quitease las resistencias de 0.22MΩ y vuélvase a conectar el voltmetro a diodo (D.V.) sobre C38 (en serie de 0.1MΩ).

A3 009 04	Cabinet (00)	Xast (00)	Gehäuse (00)	Coffret (00)	A3 099 04
A3 162 34	Cabinet (01)	Kast (01)	Gehäuse (01)	Coffret (01)	A3 162 34
A3 356 31	Strip A	Strip A	Streifen A	Bande A	A3 356 31
A3 592 47	Strip B	Strip B	Streifen B	Bande B	A3 592 47
A3 261 71	Rear cover	Achterwand	Rückwand	Panneau arrière	A3 261 71
A3 783 93	Knop (5-7)	Knop (5-7)	Knopf (5-7)	Bouton (5-7)	A3 783 93
A3 784 34	Knop (8)	Knop (8)	Knopf (8)	Bouton (8)	A3 784 34
994/04	Spring in knob	Veer in knop	Feder in knopf	Ressort en bouton	994/04
P5 420 42/423	Push button /Fy	Druktoets/Fy	Drucktaaste /Fy	Bouton poussoire /Fy	P5 420 42/423
A3 355 26	Socket plate (a.s.)	Aansluitplaat (a.s.)	Anschlussplatte (A.S.)	Plaquelette à douille d'ant.	A3 355 26
979/2x19	Socket plate (i.s.)	Aansluitplaat (i.s.)	Anschlussplatte (I.S.)	Plaquelette à douille h.p.	979/2x19
979/F5x1	Female plug (P.U.)	Contreplug (P.U.)	Kontrastecker (P.U.)	Fiche femelle P.U.	979/F5x1
979/M5x1	Plug (P.U.)	Plug (P.U.)	Stecker (P.U.)	Fiche P.U.	979/M5x1
A3 228 85	Voltag selector	Spanningsomsch.	Spannungsumschalter	Carroussel de tension	A3 228 85
A3 830 35	Window (EM84)	fenster (EM84)	Fenster (EM84)	Permetre (EM84)	A3 830 35
A3 940 27/011	Dial (N.B.)	Schwal (N.B.)	Skala (N.B.)	Cadran (N.B.)	A3 940 27/011
A3 813 83	Screw fitting dial	Schroef, bev. schaal	Schraube, bef. skala	Vis, fix. cadran	A3 813 83
971/127	Contact slide (2,4)	Contactenschieb (2,4)	Kontaktschiebe (2,4)	Coulisse de contact (2,4)	971/127
971/128	Contact slide (1,3)	Contactenschieb (1,3)	Kontaktschiebe (1,3)	Coulisse de contact (1,3)	971/128
971/129	Contact plate (2,4)	Kontaktenplaat (2,4)	Kontaktplatte (2,4)	Plaque de contact (2,4)	971/129
971/130	Contact plate (1,3)	Kontaktenplaat (1,3)	Kontaktplatte (1,3)	Plaque de contact (1,3)	971/130
971/77	Slide contact	Schuicontact	Lateur	Courseur	971/77
971/79	Contact lip	Contactlip	Kontaktzunge	Languette de contact	971/79
A3 418 12	P.M.-unit	P.M.-einheid	P.M.-Einheit	Unité P.M.	A3 418 12

C1/21	AC 5306/100+50	R1	927/K1K	anti-hum coil	318/19	I.F. band pass filter A.M.
C38	909/24	R6/12	E 001 AD/A2K2	Anti-vibrationspoule	222/23	M.F. bandfilterspoel A.M.
C47	909/064	R20/21	E 098 AL/00B20	Bobine anti-ronflee	324/25	Z.F.-Bandfilterspoel A.M.
C49	48 233 20/2K2	R24	E 098 AL/00B13	Bobina de supr. de zumbido	C30/31	Transformateur M.F.-A.M.
C50	48 233 20/3K3	R32	E 001 AD/A1K5	I.F. coupling coil P.M.		Transformateur F.I.-A.N.

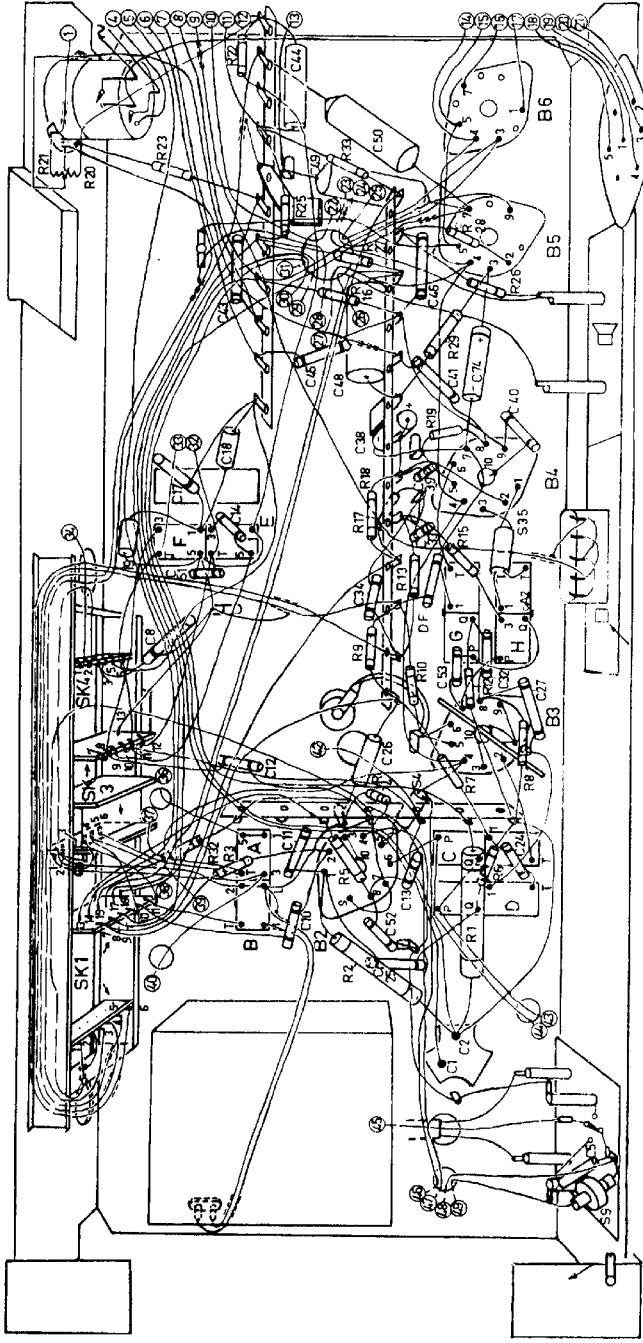
S1	Mains transformer	S9	A3 803 61	Oscillator coil S.W.	925/452-2	Discriminador coil
S2	Netztransformator	S10	A3 127 83	Oscillatormspul K.V.	926/10,7 RD-2	Discriminatorspoel
S3	Transformateur de réseau	C9		Oscillatormspul K.V.		Discriminatorspoel
Z1	Transformateur de red	S11		Bobina de oscilador O.C.		Bobina de discriminador
S5	Aerial coil S.W.	S13		Bobina de oscilador O.C.		Loudspeaker trafo
S6	Antennenspoel K.G.	S14	923U/185-590K	Oscillatormspul M.G./L.C.	A3 134 10	Luidsprekertrafo
	Antennenspoel K.W.	S15		Oscillatormspul M.W./K.W.		Trafo de altavoz
	Bobine d'antenne K.W.			Bobine d'osc. P.O./C.O.		Trafo de altavoz
	Bobina de antena O.C.			Bobina de osc. O.M./O.L.		Tuning capacitor
S7	Ferroreceptor	S16		I.F. band-pass filter F.M.	920/489+511	Afstemcondensator
S8	Stabfentenne	S17	926/10,7	M.F. bandfilterspoel P.M.		Abstemcondensator
	Antenne en tige	C20		Z.F.-Bandfilterspoel U.K.W.		Condensateur d'accord
	Antena de varilla	C21		Transformateur M.F.-P.M.		Condensador de sintonía
		C22		Transformador de F.I.-P.M.		

167

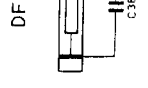
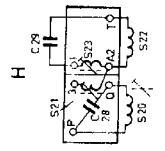
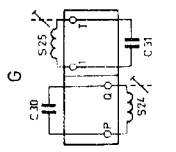
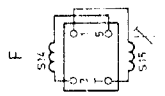
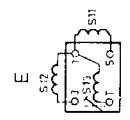
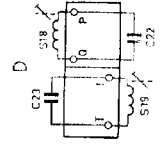
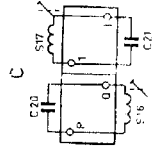
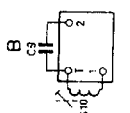
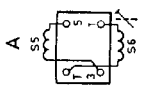


R 196 06

S	9	D.B	CA	4	H.G.	35.F.F.	
C	5.	25	58.10	13.24.11	12.26	27	52.34.8
R	2	1	3.6.5.32	4	7	6	11.10
							9
							13.15
							17.18
							19
							29
							16.26.27
							28
							25
							20.21.23
							33
							72



R195 98



5	3, 7, 8, 9, 30, 51, 6, 52, 53, 54, 10, 58, 11, 12, 13, 57, 14, 15, 55, 57, 56, 60, 59, 20, 22, 25, 27, 24, 23, 25, 35, 36, 18, 17, 19	4, 3, 26, 27, 24, 30, 2, 1
C	5, 6, 7, 8, 9, 10, 11, 12, 13, 14, 15, 16, 17, 18, 19, 20, 21, 22, 23, 24, 25, 26, 27, 28, 29, 30, 31, 32, 33, 34, 35, 36, 37, 38, 39, 40, 41, 42, 43, 44, 45, 46, 47, 48, 49	
R	1, 2, 3, 4, 5, 6, 7, 8, 9, 10, 11, 12, 13, 14, 15, 16, 17, 18, 19, 20, 21, 22, 23, 24, 25, 26, 27, 28, 29, 30, 31, 32, 33, 34, 35, 36, 37, 38, 39, 40, 41, 42, 43, 44, 45, 46, 47, 48, 49, 50, 51, 52, 53, 54, 55, 56, 57, 58, 59, 60, 61, 62, 63	

