

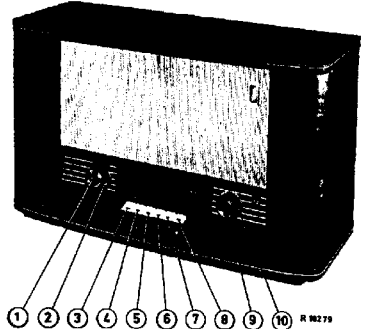
STRICTLY CONFIDENTIAL
For Philips
Service Dealers only
Copyright

PHILIPS Service

Published by
THE CENTRAL SERVICE DEPARTMENT
N.V. Philips' Gloeilampenfabrieken
Eindhoven

notes

B7X79B



Controls - Organes de commande - Botones de mando		
1. Volume control	- Régulateur d'intensité	- Regulador de volumen
2. Bass switch + tone control	- Comm. des graves + rég. de tonalité	- Comm. de notas bajas + reg. de tono
3. Off-switch	- Interrupteur	- Interruptor
4. L.W. - O.O. - O.L.	: 740 - 2000 m	(405 - 150 km/s)
5. M.W. - P.O. - O.M.	: 185 - 580 m	(1622 - 517 km/s)
6. S.W.1 - O.C.1 - O.C.1	: 58,5 - 187 m	(5,1 - 1,6 Mo/s)
7. S.W.2 - O.C.2 - O.C.2	: 21,5 - 60,5 m	(14 - 4,95 Mo/s)
8. S.W.3 - O.O.3 - O.O.3	: 13,5 - 21,5 m	(22 - 14 Mo/s)
9. Economy switch	- Comm. économiseur	- Comm. para economizar corriente
10. Tuning	- Sintonisation	- Sintonía

Loudspeaker - Haut-parleur - Altavoz		I.F. - M.F. - F.I.	
AD 3700 Z		452 ka/s	
Battery voltages - Tensions de batterie - Tensiones de baterías		Economy switch - Comm. économiseur - Comm. para economizar corriente	
Va = 90 Volt	Vr = 1,5 Volt	Normal:	To the left
Consumption - Consommation - Consumo			vers la gauche
Normal: Ia = 9,5 mA	If = 250 mA		hacia la izquierda
Economy position :		Economy position :	to the right
Position économique: Ia = 6,3 mA	If = 175 mA	Position économique vers la droite	
Posición económica :		Posición económica :	hacia la derecha

Cabinet	Géffret	Mueble	
Knob, large, left	Bouton, grand, à gauche	Botón, grande, izquierda	A3 007 39
Knob, large, right	Bouton, grand, à droite	Botón, grande, derecha	A3 751 60
Knob, small, left	Bouton, petit, à gauche	Botón, pequeña, izquierda	A3 751 61
Knob, small, right	Bouton, petit, à droite	Botón, pequeña, derecha	A3 751 59
Push button	Touche	Tecla	A3 751 58
Spring, in small knobs	Ressort, pour petit bouton	Resorte, para pequeño botón	A3 417 61
Spring, in large knobs	Ressort, pour grand bouton	Resorte, para gran botón	A3 522 08
Tension spring, in band switch	Ressort de tension, pour comm. de gammes	Resorte de tensión, para comm. de ondas	A3 208 03
Battery switch	Commutateur de batterie	Comutador de batería	F 071 AA/01
Torsion spring, in push button unit	Ressort de torsion, pour mécanisme de bouton poussoir	Resorte de torsión, para mecanismo de pulsadores	A3 651 16
Compression spring, in push button unit	Ressort de pression, pour mec. de bouton poussoir	Resorte de presión, para mec. de pulsadores	A3 644 85
Tension spring, in driving drum	Ressort de tension, pour tambour	Resorte de tensión, para cuerda de arrastre	89 312 10
Tension spring, in econ. switch	Ressort de tension, pour comm.écon.	Resorte de tensión, para comm.écon.	49 954 44
Oromet, fixing dial	Manchon, fixation cadran	Manguito, fijación cuadrante	P5 420 03/08
Dial	Cadrán	Cuadrante	928/B7x79B
For the parts which do not occur in this list, consult the catalogue for Service Spare parts.	Pour les pièces ne figurant pas dans les listes ci-dessus, consulter le catalogue pour pièces de rechange standard.	Para las piezas que no figuran en la lista de piezas, consultese el catálogo para piezas de recambio standard.	

S1	924/4100	S15	923/24-52M	S27)	
S2	} 921/11-20M	S16)		S28)	925/452
S3		S17)	923/60-187M	S38)	
S4	} 921/24-52M	S18)		S39)	
S5		S19	923U/185-590M	S32)	A3 153 75
S6	} 921/60-187M	S20		S33)	
S7		S21)	923U/780-2000M	S34)	
S8	} 921/185-590M	S22)		S40	A3 118 46
S9		S23		C3)	49 001 94
S10	} 921/780-2000M	S24)	925/452	C4)	
S11		S25)		R18)	916/OL400K-1N6
S11a	S26)		R19)		
S12	} A3 118 43	S27)	926/452-2	R21)	916/EL400K-1N6
S13		S28)		R22)	
S14)	A3 118 45	S29)			
		S30)			
		S31)			
		S32)			
		S33)			
		S34)			
		S35)			
		S36)			
		S37)			
		S38)			
		S39)			
		S40)			

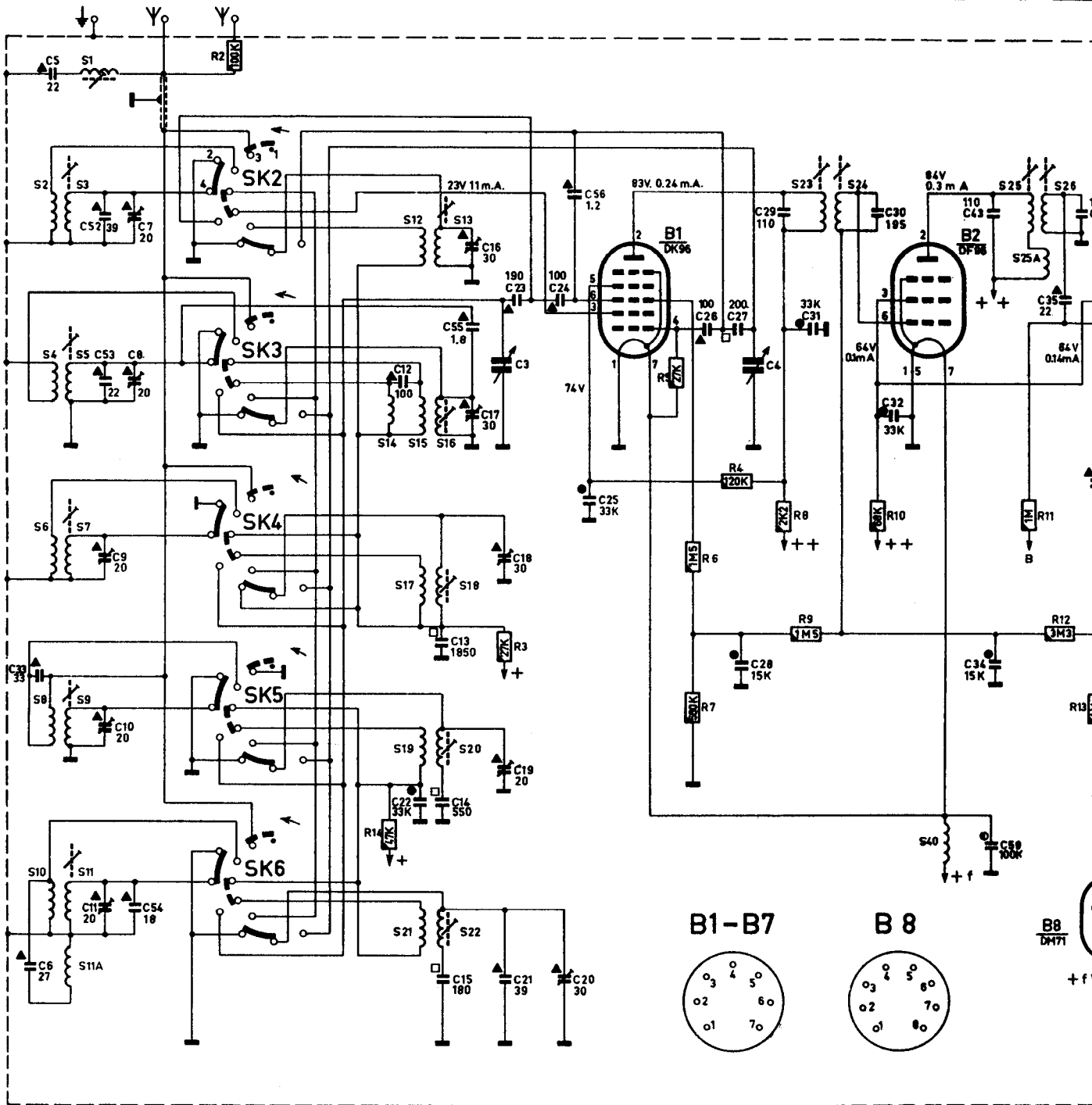
Wave range	Trimming point	Signal	Trim	Indication	
Gammae	Point d'ajustage	Signal	Régler	Indication	
Márgenes	Punta de ajuste	Señal	Ajustarse	Indicación	
I.F. circuits Circuits H.F. Circuitos de F.I.	5	1630 ko/s	452 ko/s via 33000 pF - g1B3	S28, S27	max. output
			452 ko/s via 33000 pF - g1B2	S26 S25 S27	max. de sortie
			452 ko/s via 33000 ko/s - g3B1	S23, S24	máx. salida
I.F. filter Filtre de H.F. Filtro de F.I.	5	610 ko/s	452 ko/s	S1	min. output min. de sortie mín. salida
H.F. circuits Circuits H.F. Circuitos de H.F.	4	174,3 ko/s	174,3 ko/s	S22, S11	max. output max. de sortie máx. salida
	5	610 ko/s	610 ko/s	S20, S9	
	6	1,9 Mo/s	1,9 Mo/s	S18, S7	
	7	5,9 Mo/s	5,9 Mo/s	S16, S5	
	8	14,55 Mo/s	14,55 Mo/s	S13	
		22,2 Mo/s	22,2 Mo/s	S3	
	7	14,2 Mo/s	14,2 Mo/s	C17, C8	
	6	5,2 Mo/s	5,2 Mo/s	C18, C9	
	5	1630 ko/s	1630 ko/s	C19, C10	
	4	408 ko/s	408 ko/s	C20, C11	

≡ Damp S25 with 10 KΩ.
Amortir S25 avec 10 KΩ.
Amortiguense S25 con 10 KΩ.

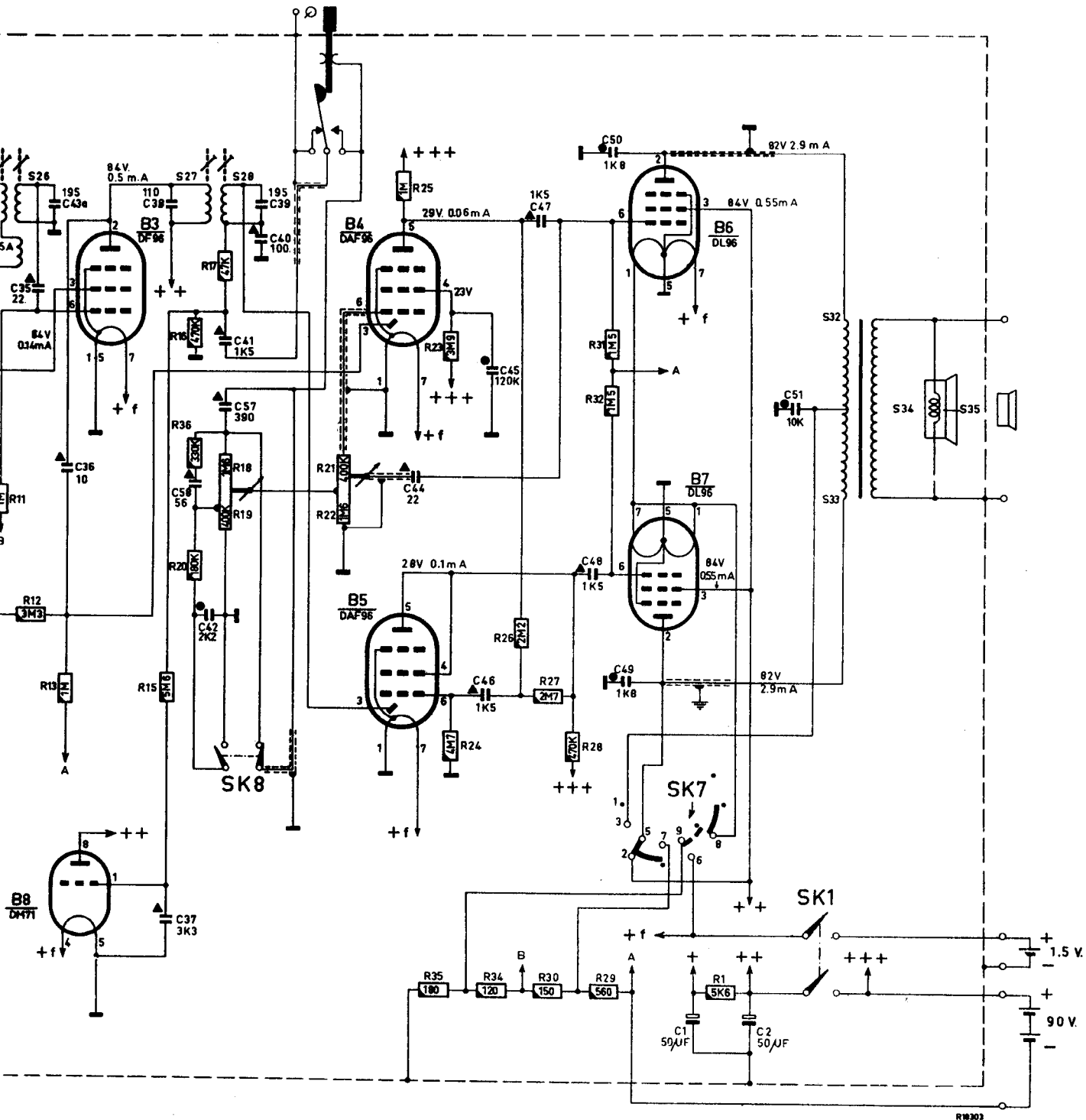
≡ Damp S26 with 10 KΩ.
Amortir S26 avec 10 KΩ.
Amortiguense S26 con 10 KΩ.

≡≡≡ Tune set to the frequency of the service oscillator.
Régler l'appareil au signal de l'oscillateur de service.
Sintonícese el aparato a la señal del oscilador de servicio.

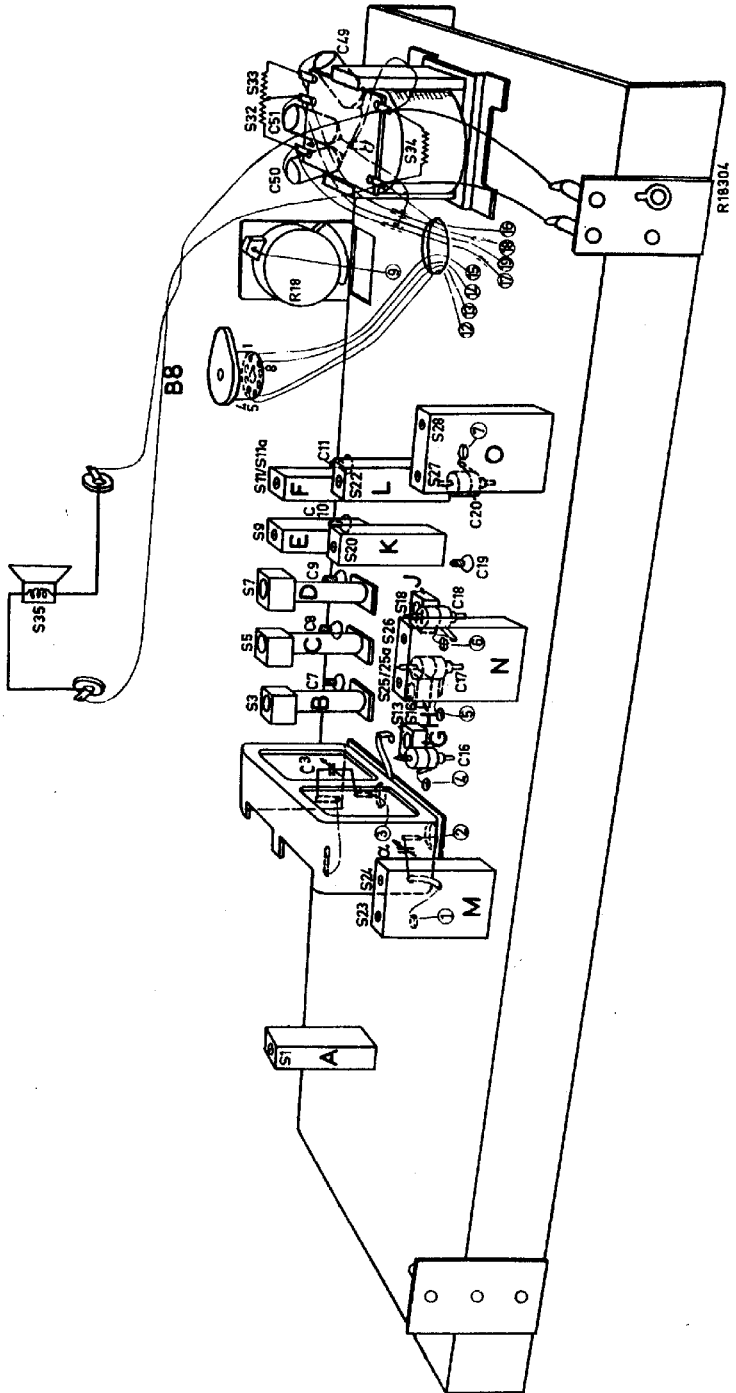
S	2, 4, 6, 8, 10, 3, 5, 9, 7, 11, 1A, 1	14, 12, 15, 17, 19, 21, 13, 16, 18, 20, 22	23, 24	40	25, 26, 25A
C	6, 5, 33, S2, S3, 9, 10, 11, 7, 8, 54	12, 22, 13, 14, 15, 16, 55, 17, 3, 18, 19, 21, 23, 24, 20, 25, 56	26, 27, 28, 4, 29	31, 30, 32	43, 34, 50, 35, 43a, 36
R		14, 3	5, 8, 7, 4, 8, 9	30	11, 12

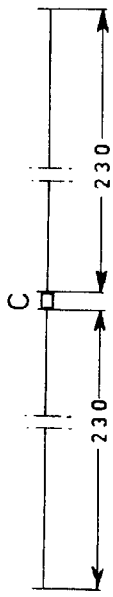
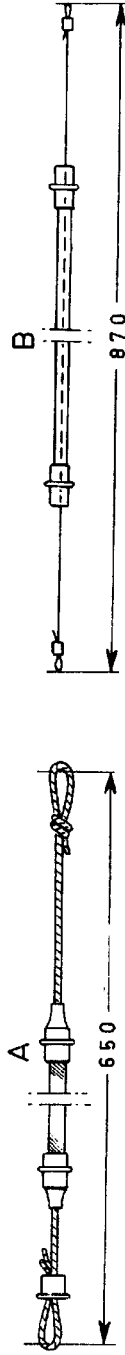
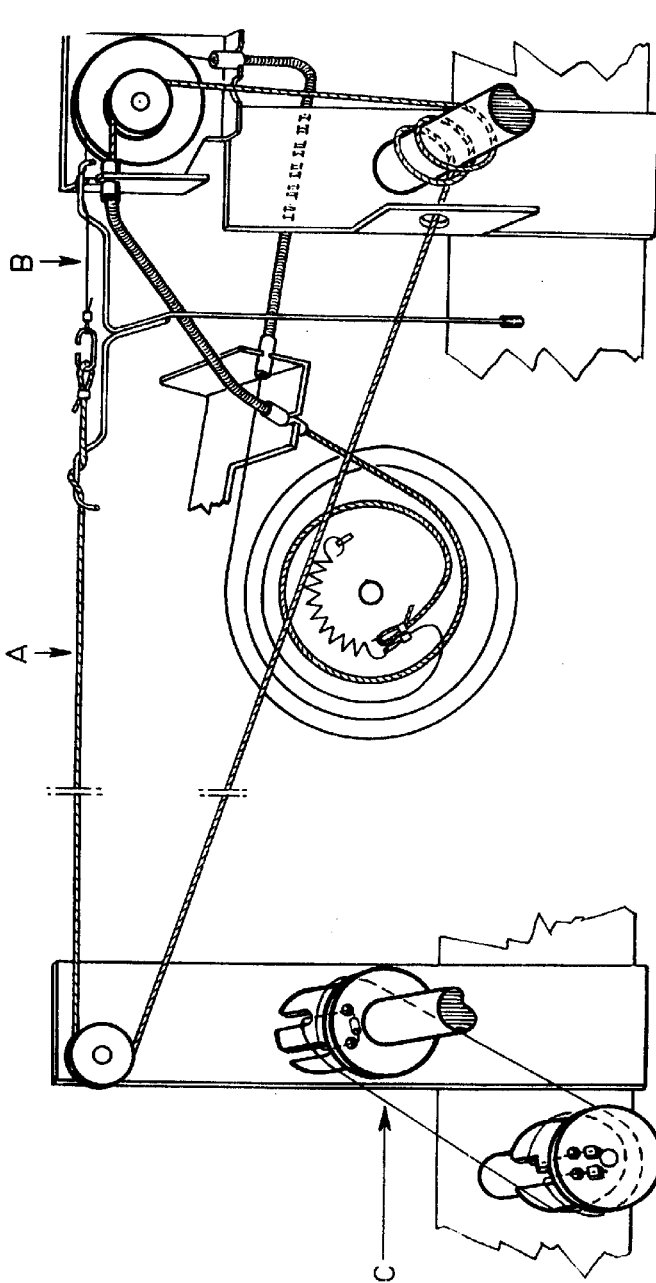


26, 25A	27, 28	32, 33, 34	35
35, 43, 36	38, 37, 50, 42, 41, 57, 39, 40	1, 2, 51	
11, 12, 13	15, 16, 20, 17, 18, 19	21, 22	25, 23, 24, 35, 34, 26, 27, 30, 28, 29, 31, 32



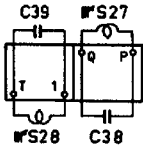
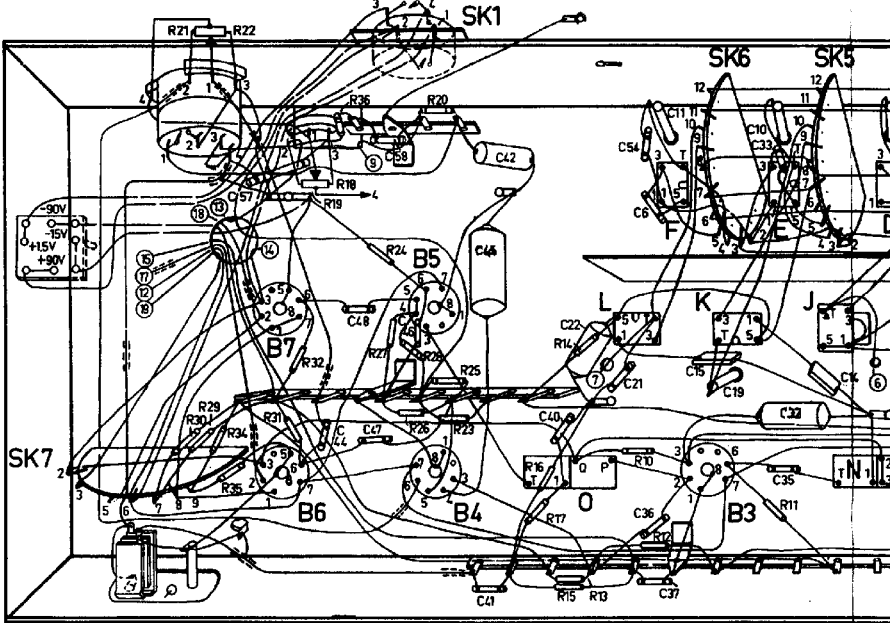
RW302



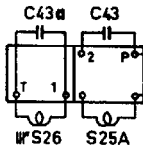


R15535

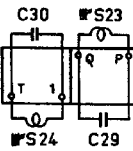
S:						O.	L.	F.	K.	E.	J.	N.	D.
C:		57.	44.	48,47,58,46.		41,45,42.	40.	22,21.	54,6,36,37,11,15,19.		33,10,32,35,14.		9
R:		30.	21,22,29,34,35.	31,32,19,18.		36,34,27.	28,26,20,25,23.		17,16.	13,15,14.	10,12.		11.



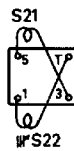
O



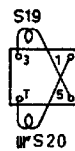
N



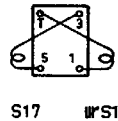
M



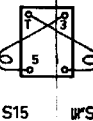
L



K

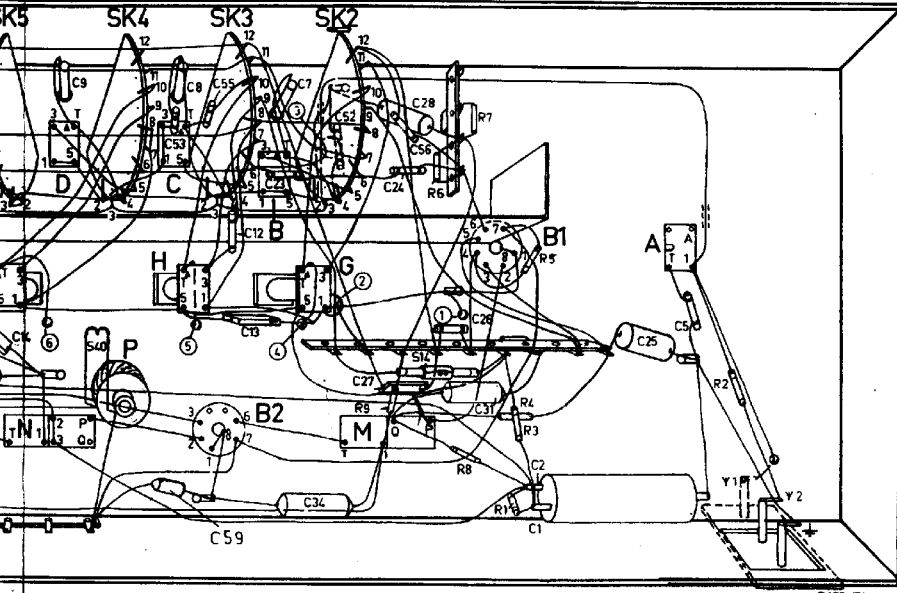


J

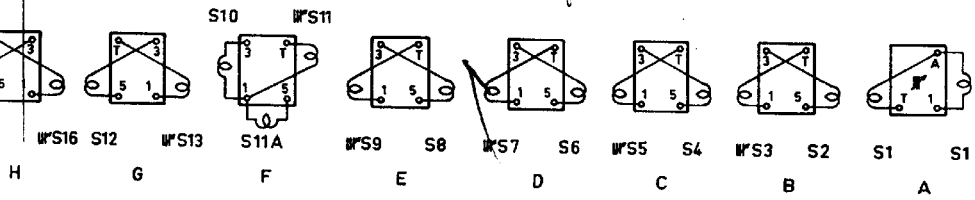


H

J.	N.	D.	P.	C.M.	B.	G.	M.	L.	A.		
4.	9.	5	9	8.53.	55.12.	13.	7.23.	34.52.	28.56.24.27.26.31.1.2.	25.	5.
							9.	6.	7.8.	4.3.1.5.	2.



R172 47A



R15501A